



SFD المنجوق الإجتماعي للتنمية
Social Fund for Development

Environment Department

Operational Manual

January 2014

List of Acronyms

CEA	Country Environmental Analysis
CSHCD	Central Sector for Human and Community Development
EA	Environmental Assessment
EAFMSE	Enhancing Access to Finance for Micro and Small Enterprises
EEAA	Egyptian Environmental Affairs Agency
ED	Environmental Department
EPP	Environmental Policies Program
ESAF	Environmental and Social Assessment Framework
ESMF	Environmental and Social Management Framework
FI	Financial Intermediaries
HQEFP	Head Quarters Environmental Focal Point
MCS	Microfinance Central Sector
MFI	Micro-Finance Institutions
MSE	Micro and Small Enterprises
MSEA	Ministry of State for Environmental Affairs
MSEDIG	Micro and Small Enterprises Development for Inclusive Growth
PDO	Project Developmental Objective
PIU	Project Implementation Unit
REFPs	Regional Environmental Focal Points
SEDO	Small Enterprise Development Organization
SFD	Social Fund for Development
WB	The World Bank

Table of Contents

List of Acronyms.....	2
1 Introduction	4
1.1 Background	Error! Bookmark not defined.
1.2 Objectives of the ESMF	Error! Bookmark not defined.
2 Legislative Framework	Error! Bookmark not defined.
2.1 Egyptian Legislation	Error! Bookmark not defined.
2.2 World Bank Safeguard Policies	Error! Bookmark not defined.
2.3 Comparative Assessment of National Legal Framework and WB Requirements	Error! Bookmark not defined.
	not defined.
3 Description of the Project	Error! Bookmark not defined.
4 Environmental and Social Issues.....	Error! Bookmark not defined.
5 Management Framework	Error! Bookmark not defined.
5.1 Mitigation and Monitoring of Negative Impacts	Error! Bookmark not defined.
5.2 Lessons and Experience of EAFMSE EMP Implementation	Error! Bookmark not defined.
5.3 Institutional Arrangements.....	Error! Bookmark not defined.
Annex 1:	14

List of Figures

Figure 5-1 Flow-chart for the main ESMF measures to be taken for sub-projects **Error! Bookmark not defined.**

List of Tables

Table 2-1: WB Safeguard Policies and their relevance to the MSEDIG project **Error! Bookmark not defined.**

1 Introduction

The SFD was established by Presidential Decree 40/1991 as a socio-economic safety net to combat unemployment, alleviate poverty, improve living conditions and help attain comprehensive socio-economic development. The operations of the SFD includes many development activities comprising infrastructure projects and different types of Small and Medium Enterprises (SMEs), and being committed towards protecting the environment, the SFD has integrated the environmental dimension in its operations for supporting sustainable development among its projects.

The environmental program was first established in the SFD in order to respond/comply with a World Bank's request and loan agreement under SFD III. It was firstly established as an Environmental Development Unit in November 1998. The Unit evolved several times, were it became the Environmental Development Department, then the Environmental Policies Program (EPP). After merging the Planning & Monitoring Group with the International Cooperation Group in January 2009, the EPP has become a central, crosscutting program operating under the Planning & International Cooperation Group.

During the past years the EPP was responsible for integrating the environmental assessment process in the sub-project cycle. The EPP was responsible for ensuring that different environmental issues are considered at the preparation and implementation phases of the SFD sub-project cycle through monitoring and evaluating the sub-project's adherence to environmental policies and standards.

In September 2013 the SFD has taken a step forward to improve its environmental protection measures, through upgrading the EPP to be the Environmental Department (ED) under the Central Sector for Human and Community Development (CSHCD), this has been issued through a Decree from the SFD Managing Director.

This document is aiming at defining the environmental policy of the SFD, describing the procedures for following up environmental measures of the SFD-supported projects, providing staffing requirements and job descriptions for its staff and introducing standard working documents for the periodic reporting.

2 The Organizational Structure

2.1 The SFD Roles and Responsibilities

According to Law 141/2004 the SFD is the responsible body for developing and supporting SMEs in collaboration with Ministries, Public Authorities and Local Units. The objectives of the SFD are identified as:

- Developing and financing feasible MSEs
- Improving living standards in targeted areas
- Contributing to employment creation, especially for the youth and women
- Alleviating poverty

The SFD activities comprise mobilizing national and international technical and financial resources to contribute to achieving socio-economic comprehensive development, providing upgraded financial and non-financial services for MSEs, financing projects that create job opportunities, develop basic and community infrastructure and encouraging entrepreneurship and linking large enterprises to small ones. The SFD applies special policies towards certain groups of the community such as youth, women, and groups with special needs. The SFD is working in collaboration with a number of international agencies and financing bodies.

The types of projects and operations supported by the SFD include:

- Financial services to SMEs through direct lending, and different financing instruments through microfinance organizations and intermediate banks. Loan ceiling reaches 2 million EGP per enterprise, financing working capital, machines and equipment. The services to small enterprises are administered through the Central Sector of Small Enterprise Development Organization (SEDO), while the services to micro organizations are administered through the Micro-Credit Sector
- Non-financial services to small enterprises include providing technical support, training, one-stop-shop services¹, guidelines, exhibitions for products and business/technology incubators. The non-financial services are also administered by SEDO and Micro-Credit.
- Infrastructure projects that are related to community development, poverty alleviation and job creation. Such projects achieve a double purpose of improving infrastructure services to communities and alleviate unemployment through labor intensive projects. Infrastructure

¹ One-stop-shop services include issuing licensing and legal permits at the SFD Branch Office by representatives of these licensing authorities.

projects are implemented in water, wastewater, roads, irrigation, public buildings, and environmental services sectors (canal covering and pitching) in coordination with Governorates and Ministries responsible for these infrastructures interventions. Community development projects are administered by the CSHCD through the Infrastructure and Public Projects Sector (IPPS).

- Community development projects with special attention to the poorest villages deprived of basic social development services (i.e. health, educational and environmental services) using targeting mechanisms and poverty maps. Community development projects are administered by the CSHCD through the Community Development and Training Sector (CDTS).

2.2 The Environmental Policy of the SFD

The mainstreaming of environmental issues within the SFD operations has started many years ago as mentioned earlier. At the beginning of the new millennium, SFD has developed environmental guidelines for all its activities: micro and small enterprises (MSEs), public works, and human and community development projects. It has also named an environmental officer in each SFD regional office. Each officer received advanced training given by experts of Ministry of State for Environmental Affairs. In addition, SFD project officers were trained on integrating the environmental safeguards and dimension into all project phases (preparation, implementation and operation). Currently, the regional offices are in the process of advising small entrepreneurs to fill in Environmental Classification Formats “A” and “B” and submit them to the Environmental Affairs Agency to obtain approval of their projects prior to starting them. At the same time, environment officers in the regional offices verify that the different public works projects conform to these Environmental Classification Formats.

Within the recent steps taken by the SFD to improve its environmental performance, the SFD decided to adopt a well-defined environmental policy that provides a concise description of the environmental commitments of the SFD. The new environmental policy of the SFD reads:

“The Social Fund for Development is committed to minimize the impacts of its operations on the environment and to respect all environmental laws and regulations within its own operations and for its supported projects. The Social Fund will adopt a strategy that includes:

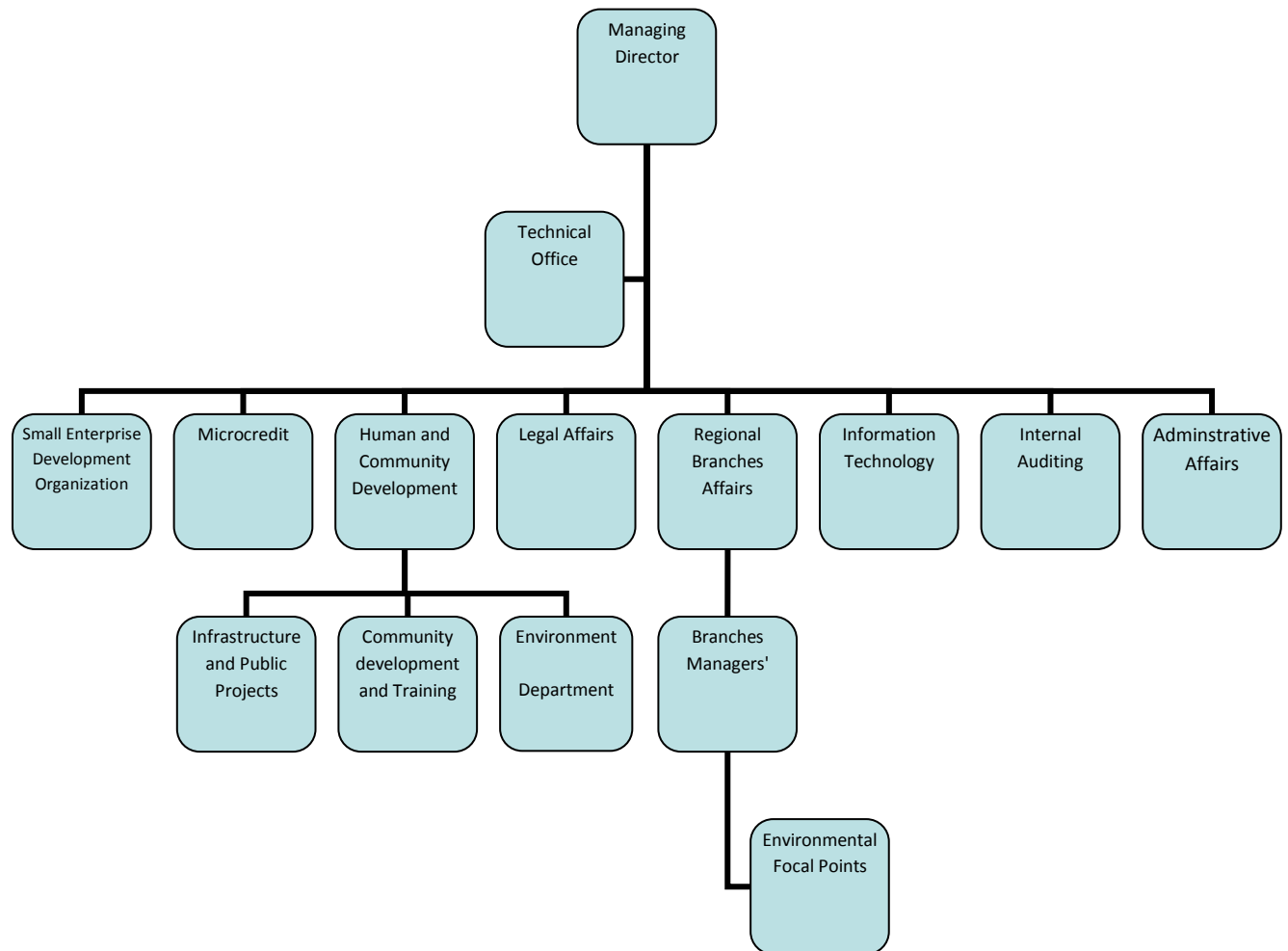
- ***Ensuring that its supported projects are approved by environmental licensing authorities and complies with the recognized environmental standards of funding agencies***
- ***Following-up the environmental performance of its supported projects***
- ***Supporting and promoting projects of benefits to the environment***

- *Improving the efficiency of its own operations through energy conservation, waste minimization, promotion of waste recovery and good environmental practices*
- *Improving the environmental awareness of its staff and clients*
- *Achieving continual improvement of its environmental performance”*

2.3 The SFD Managing Director will sign this policy and it will be published in the SFD head quarter, regional offices and website. The SFD will identify certain measurable indicators to monitor the improvements in mainstreaming this policy into its operations in order to ensure continual improvement. **The ED within the SFD**

According to the SFD Managing Director Decree 62/2013 the ED is defined to be one of the Departments of the CSHCD. **Figure 1** below illustrates the organizational chart of the SFD and the location of the ED within the organizational structure.

Figure 1: Organizational Chart of the SFD and the location of the Environment Department and staff of regional branches



There will be Environmental Focal Points (EFPs) in the SFD branches in the different governorates who will be responsible for following up the environmental measures in projects in their governorates. The EFPs will administratively be affiliated to the Managers of their Branch Offices, but will report to the ED Director in terms of their follow-up procedures.

3 Roles and Responsibilities of the ED

The main role of the ED is to oversee the implementation of the SFD Environmental Policy through executing adequate procedures and measures relevant to the objectives of the policy. The ED will be a cross cutting Department in the SFD, and will coordinate with all Sectors, Departments and Branch Offices to implement the environmental policy and procedures.

The ED will monitor the SFD environmental performance against a number of measurable indicators that should be reported periodically to ensure continual improvement. The following tasks will be carried out by the SFD:

- Ensure that all the projects funded by the SFD have the adequate environmental licensing prior to starting the project. This will be done through carrying out a standard classification for projects sponsored by the SFD that complies with the requirements of the Environmental Impact Assessment (EIA) Guidelines of the Ministry of State for Environmental Affairs (MSEA). This standard classification will be carried out in coordination with MSEA for different sectors of MSEs, infrastructure projects and community development projects.
- Follow-up the implementation of the Environmental Management Plans (EMPs) by the projects that are subject to environmental classification or special environmental conditions. This will be carried out in collaboration with the Internal Auditing Department and the Information Technology Department, as shall be further discussed, through completing standard questionnaires about the environmental measures and feeding it to a Management Information System (MIS). The follow-up questionnaires will be supported by environmental auditing that will be carried out by the ED staff and EFPs for samples from active projects
- Document the environmental benefits achieved through the SFD supported projects, such as community projects that includes removal of wastes or infrastructure projects that includes covering or cleaning of waterways. This documentation will be carried out also through a follow-up questionnaires and auditing by ED/EFPs for sample projects
- Coordinate with other departments (such as the SEDO) to initiate new types of projects that have environmental benefits to the standard types of projects currently being supported by the SFD. Such projects could include supply of renewable energy equipment, or providing energy saving services.
- ASSIST the SFD administrative affairs department at the SFD in implementing a policy for saving energy and reducing wastes/emissions among the administrative operations of the SFD offices. Such policy will be coordinated with other departments and sectors so that the

SFD offices go towards using energy saving fixtures, reduce vehicle emissions and consumed fuels, conserve water utilization, reduce consumed paper, use environmentally friendly products ... etc.

- Implement a gradual policy for banning smoking in closed areas of the SFD offices. This could start with an awareness campaign and identifying specific non-smoking areas, then these areas would be expanded to ultimately reach all closed areas in all SFD offices.
- Initiate environmental awareness campaigns for SFD staff and its clients (beneficiaries and intermediate organizations). This campaign could start with making all clients aware about the adopted environmental policy of the SFD and could later include holding workshops, awareness campaigns and allocating incentives to branches with best environmental performance.
- Guide the SFD administrative Affairs department in monitoring the environmental performance of the SFD through a set of measureable indicators and include these figures in the annual report that would be reviewed by the Managing Director and disclosed in the SFD website. Among the proposed indicators (could be classified by SFD Regional office):
 - o Number of EIAs performed for SFD projects against number of total projects
 - o Number of audited SFD projects against number of projects subject of environmental management plans and conditional licensing
 - o Number of projects that does not satisfy environmental conditions according to auditing by ED/EFPs against number of total audits
 - o Number of projects satisfactory report their environmental performance against the number of classified projects according to MSEA Guidelines
 - o Number of SFD supported projects with environmental benefits classified by type of project and the achieved environmental benefits (such as number of community cleansing projects with the amount of waste accumulations removed and transferred to landfills, and number of polluted watercourses covering projects with the reported length of such water courses ... etc.)
 - o Amount of electric energy (kilowatt-hours)²utilized against amount of disbursed funds to sub-projects
 - o Amount of paper purchased against amount of disbursed funds
 - o Amount of vehicles fuel consumed³ against amount of disbursed funds

² Also correspondent CO2 emissions could be calculated for such consumed energy according to standard emission factors

- Amount of CFC refrigerants loaded to ACs, vehicles ACs and refrigerators against amount of disbursed funds
- Non-smoking areas against total office areas
- Carry out an annual review for the environmental performance indicators and environmental initiatives done through the year. A continual improvement of the environmental indicators should be maintained.

³ As above

4 Staffing of the ED

The Director of the Environmental Department has been already appointed and running the Department. It is believed that the ED Director should be assisted with at least one Environmental Officer (and probably two) during the first year of operation (year 2014). The experience during the year will indicate whether the ED staff is sufficient to carry out their tasks or new staff will need to be recruited.

As mentioned earlier, 27 EFPs have been already assigned in SFD Regional Offices in Governorates to follow-up the environmental measures of sub-projects. Also the experience during the first year of operation will identify if some of the regional offices will require more than one EFP according to the work load.

The main duties of the ED Director will be:

- Overall management of the ED and supervision of its staff
- Review the environmental policy, targets and procedures, and discuss them with different Sectors and Departments
- Prepare annual plans for the ED indicating targets and tasks to be implemented, including the review and follow-up of the SFD projects with support of ED staff and EFDs
- Supervise monitoring of the environmental performance of the SFD according to the measureable indicators and submit annual report with the achievements during the year
- Liaise with MSEA and other bodies on the environmental affairs of the SFD
- Coordinate with other SFD Sectors, Departments and Regional Offices the different actions that should be taken to fulfill the environmental requirements
- Supervise the tasks of the EFPs in Branch Offices
- Set a plan to carry out audits for SFD projects

The main duties of the ED Environmental Officer(s) will be:

- Follow-up environmental status of SFD projects according to the directions of the ED Manager
- Supervise the plan to carry out audits for SFD projects
- Review the reporting of different EFPs about projects in their Governorates
- Review and update the environmental MIS according to field data
- Periodically report to the ED Manager about work progress

- Assist the ED Manager in collecting relevant data about the environmental indicators, reporting about environmental affairs, liaising with other SFD Departments and other bodies, preparing annual plans, annual reports and different reports

The main duties of the EFPs in the Governorate Branches:

- Review the follow-up questionnaires about the environmental performance of SFD projects in the Governorate
- Carry out audits for SFD projects according to a pre-set plan
- Ensure that the projects in their governorates are complying with environmental licensing procedures and are adequately reporting on environmental measures included in their EMPs and environmental licensing conditions.
- Review and update the environmental MIS according to field data
- Assist the ED Manager in collecting data that would enable monitoring the environmental indicators related to their Branches and Governorates
- Quarterly report to the ED Manager about work progress or when needed

The environmental follow-up of MSE projects will be conducted by the SFD Internal Auditing Sector on quarterly basis after receiving the environmental license, as the Sector already reviews different projects to ensure compliance with the funding conditions on monthly basis, through filling standard environmental questionnaires. The filled questionnaires will be loaded to a Management Information System (MIS) so as the ED staff and EFPs could retrieve and follow-up. The standard environmental follow-up questionnaires is in Annex 1.

Other standard questionnaires for different infrastructure projects (water, wastewater, irrigation, roads, weeding and covering of watercourses) and community development projects (cleansing campaigns, evacuation of sewage cesspits and healthcare services) are also in Annex 1. The questionnaires of infrastructure projects will be filled by the project contractor, and the questionnaires of community development projects will be filled by the correspondent NGO. All questionnaires will be filled on quarterly basis after receiving the environmental license.

Annex 1:

Follow-up Questionnaire for SME projects

**Environmental Follow-up Questionnaire for SME Projects
Funded by SFD**

Date of visit: ---- / ---- / ----

Time of visit: -----

Start and end of the quarter covered:

from: ---- / ---- / ----

to: ---- / ---- / ----

Date of filling project basic data: ---- / ---- / ----

Governorate: -----

Markaz: -----

SFD Staff filled this questionnaire: -----

1. Basic Data:

Note: Basic data to be filled at the start of the project with update the data if required during follow-up

Borrower name: -----				Project name: -----			
Borrower Code: -----				Project Code: -----			
Phone No.: -----				Address: -----			
Sector of project:	Commercial <input type="checkbox"/>	Industrial <input type="checkbox"/>	Free employment:	<input type="checkbox"/>	Agriculture <input type="checkbox"/>	Services <input type="checkbox"/>	Other: <input type="checkbox"/>
Sub-Sector: -----							
No. of workers	Permanent <input type="checkbox"/>	Temporary <input type="checkbox"/>	Skilled <input type="checkbox"/>	Semi-Skilled <input type="checkbox"/>	Un-Skilled <input type="checkbox"/>	Total <input type="checkbox"/>	
Duration of construction phase (in case no construction phase please ignore this field)							
To: ---- / ---- / ----				From: ---- / ---- / ----			
Duration of loan re-payment							
To: ---- / ---- / ----				From: ---- / ---- / ----			

2. Environmental Licensing Data:

EIA classification	Form C <input type="checkbox"/>	Form B: <input type="checkbox"/>	Form A: <input type="checkbox"/>	Special conditions <input type="checkbox"/>	No requirements <input type="checkbox"/>
Note: In case of Special Conditions projects then please ignore the rest of the Environmental Licensing Data, and in case of no requirements projects then no need to fill this questionnaire					
Approval of EEAA:					
Has the EIA been submitted to EEAA:	Yes <input type="checkbox"/>	No <input type="checkbox"/>	Date of EIA submission: ---- / ---- / ----		
Has EEAA approved the project:	Yes <input type="checkbox"/>	No <input type="checkbox"/>	Date of EEAA approval: ---- / ---- / ----		
Is EEAA approval conditional:	Yes <input type="checkbox"/>	No <input type="checkbox"/>			
In case of conditional approval please list the conditions:					

Please attach the approval letter of EEAA

3. Follow-up Data (in case of follow-up during construction phase)

Is this follow-up conducted during construction phase?	Yes <input type="checkbox"/>	No <input type="checkbox"/>	If the answer is no please go directly to Section 4
Data of construction waste: Location of construction waste disposal: ----- Capacity of waste truck: ----- m3 Number of trips: ----- Waste qty during the quarter: ----- m3 Is the disposal site identified by the Local Authority? Yes <input type="checkbox"/> No <input type="checkbox"/> Yes but with no <input type="checkbox"/> documentation			
If there is document (memo – letter) from the Local Authority identifies the disposal site please attach			
Environmental Complains Was there environmental complains from construction works during the quarter (dust – noise – unauthorized waste disposal – Other)? Yes <input type="checkbox"/> No <input type="checkbox"/> If yes please specify type of complaint and the measures taken in response: Complaint 1: ----- Complaint 2: ----- Complaint 3: -----			
Implementation of EEAA conditions during construction In case the conditional approval of EEAA includes specific measures during construction (as identified in Section 2) please specify what has been implemented during the quarter: ----- ----- ----- -----			
In case the conditional approval of EEAA includes specific monitoring measures during construction (as identified in Section 2) please specify what has been implemented during the quarter: Indicator 1:----- Number of monitoring events during the quarter: ----- Monitoring value: ----- Indicator 2:----- Number of monitoring events during the quarter: ----- Monitoring value: ----- Indicator 3:----- Number of monitoring events during the quarter: ----- Monitoring value: -----			
Has there been environmental inspection or any correspondence with EEAA or EMU during the quarter? Yes <input type="checkbox"/> No <input type="checkbox"/> If yes please specify any comments and attach correspondence: ----- ----- ----- -----			
Has there been environmental auditing by an SFD representative during the quarter? Yes <input type="checkbox"/> No <input type="checkbox"/> If yes please specify any comments: ----- -----			

4. Follow-up Data (in case of follow-up during operation phase)

<p>Environmental Complains Was there environmental complains during the quarter (dust – noise – odor – unauthorized waste disposal – Other)? Yes <input type="checkbox"/> No <input type="checkbox"/> If yes please specify type of complaint and the measures taken in response: Complaint 1: ----- Complaint 2: ----- Complaint 3: -----</p>
<p>Implementation of EEAA conditions during operation In case the conditional approval of EEAA includes specific measures during operation (as identified in Section 2) please specify what has been implemented during the quarter: ----- ----- ----- -----</p> <p>In case the conditional approval of EEAA includes specific monitoring measures during operation (as identified in Section 2) please specify what has been implemented during the quarter: Indicator 1:----- Number of monitoring events during the quarter: ----- Monitoring value: ----- Indicator 2:----- Number of monitoring events during the quarter: ----- Monitoring value: ----- Indicator 3:----- Number of monitoring events during the quarter: ----- Monitoring value: -----</p> <p>Has there been environmental inspection or any correspondence with EEAA or EMU during the quarter? Yes <input type="checkbox"/> No <input type="checkbox"/> If yes please specify any comments and attach correspondence: ----- ----- ----- -----</p>
<p>Has there been environmental auditing by an SFD representative during the quarter? Yes <input type="checkbox"/> No <input type="checkbox"/> If yes please specify any comments: ----- ----- ----- -----</p>

Follow-up Questionnaire for Road projects

**Environmental Follow-up Questionnaire for Road Projects
Funded by SFD**

Date of visit: --- / --- / ----

Time of visit: -----

Start and end of the quarter covered:

from: --- / --- / ----

to: --- / --- / ----

Date of filling project basic data: --- / --- / ----

Governorate: -----

Markaz: -----

SFD Staff filled this questionnaire: -----

1. Basic Data:

Note: Basic data to be filled at the start of the project with update the data if required during follow-up

Project name: -----			Project Code: -----			
Responsible person: -----		Phone No.: -----		Address: -----		
Project budget: -----			SFD funding: -----			
No. of workers	Permanent <input type="checkbox"/>	Temporary <input type="checkbox"/>	Skilled <input type="checkbox"/>	Semi-Skilled <input type="checkbox"/>	Un-Skilled <input type="checkbox"/>	Total <input type="checkbox"/>
Duration of construction phase (in case no construction phase please ignore this field)						
To: --- / --- / ----			From: --- / --- / ----			
Supervision period during operation (duration of loan re-payment or 5 years of operation)						
To: --- / --- / ----			From: --- / --- / ----			
Road data:						
Length of road: ---- km						
Villages and settlements served by the road						
Village 1: -----		Population: -----		Village 2: -----		Population: -----
Village 3: -----		Population: -----		Village 4: -----		Population: -----

2. Environmental Licensing Data:

EIA classification Form C <input type="checkbox"/> Form B: <input type="checkbox"/> Form A: <input type="checkbox"/>			
Approval of EEAA:			
Has the EIA been submitted to EEAA: Yes <input type="checkbox"/> No <input type="checkbox"/>		Date of EIA submission: --- / --- / ----	
Has EEAA approved the project: Yes <input type="checkbox"/> No <input type="checkbox"/>		Date of EEAA approval: --- / --- / ----	
Is EEAA approval conditional: Yes <input type="checkbox"/> No <input type="checkbox"/>			
In case of conditional approval please list the conditions:			

Please attach the approval letter of EEAA

3. Follow-up Data (in case of follow-up during construction phase)

Is this follow-up conducted during construction phase?	Yes <input type="checkbox"/>	No <input type="checkbox"/>	If the answer is no please go directly to Section 4
Data of construction waste: Location of construction waste disposal: ----- Capacity of waste truck: ----- m3 Number of trips: ----- Waste qty during the quarter: ----- m3 Is the disposal site identified by the Local Authority? Yes <input type="checkbox"/> No <input type="checkbox"/> Yes but with no <input type="checkbox"/> documentation If there is document (memo – letter) from the Local Authority identifies the disposal site please attach Has the contractor covered waste trucks before transfer? Yes <input type="checkbox"/> No <input type="checkbox"/> If no please specify reasons and measures taken ----- ----- -----			
Special environmental issues: Has DoR official supervised the contractor during this quarter? Yes <input type="checkbox"/> No <input type="checkbox"/> If no please specify reasons and measures taken ----- ----- ----- Were neighboring communities notified prior to dusty unloading operations? Yes <input type="checkbox"/> No <input type="checkbox"/> If no please specify reasons and measures taken ----- ----- ----- Were there noisy operations during nighttime? Yes <input type="checkbox"/> No <input type="checkbox"/> If yes please specify reasons and measures taken ----- ----- ----- Were the workers near noisy and dusty operations using PPE? Yes <input type="checkbox"/> No <input type="checkbox"/> If no please specify reasons and measures taken ----- ----- ----- Were there burning of loose materials for heating surfacing materials? Yes <input type="checkbox"/> No <input type="checkbox"/> If yes please specify reasons and measures taken ----- ----- -----			

Were there complaints about structures stability near construction site?

Yes No If yes please specify type of complaint and the measures taken in response:

Environmental Complains

Was there environmental complains from construction works during the quarter (dust – noise – unauthorized waste disposal – Other)?

Yes No If yes please specify type of complaint and the measures taken in response:

Complaint 1: -----

Complaint 2: -----

Complaint 3: -----

Implementation of EEAA conditions during construction

In case the conditional approval of EEAA includes specific measures during construction (as identified in Section 2) please specify what has been implemented during the quarter:

In case the conditional approval of EEAA includes specific monitoring measures during construction (as identified in Section 2) please specify what has been implemented during the quarter:

Indicator 1:----- Number of monitoring events during the quarter: ----- Monitoring value: -----

Indicator 2:----- Number of monitoring events during the quarter: ----- Monitoring value: -----

Indicator 3:----- Number of monitoring events during the quarter: ----- Monitoring value: -----

Has there been environmental inspection or any correspondence with EEAA or EMU during the quarter?

Yes No If yes please specify any comments and attach correspondence:

Has there been environmental auditing by an SFD representative during the quarter?

Yes No If yes please specify any comments:

4. Follow-up Data (in case of follow-up during operation phase)

<p>Special environmental issues:</p> <p>Was there tree plantation on sides of the road during the quarter? Yes <input type="checkbox"/> No <input type="checkbox"/> If yes please specify number and type of trees in each km of road:</p> <p>----- ----- -----</p> <p>Were there waste accumulations on sides of the road during the quarter? Yes <input type="checkbox"/> No <input type="checkbox"/> If yes please specify location and side of road where the accumulations are located:</p> <p>----- ----- -----</p>
<p>Implementation of EEAA conditions during operation</p> <p>In case the conditional approval of EEAA includes specific measures during operation (as identified in Section 2) please specify what has been implemented during the quarter:</p> <p>----- ----- -----</p> <p>In case the conditional approval of EEAA includes specific monitoring measures during operation (as identified in Section 2) please specify what has been implemented during the quarter:</p> <p>Indicator 1:----- Number of monitoring events during the quarter: ----- Monitoring value: ----- Indicator 2:----- Number of monitoring events during the quarter: ----- Monitoring value: ----- Indicator 3:----- Number of monitoring events during the quarter: ----- Monitoring value: -----</p>
<p>Has there been environmental auditing by an SFD representative during the quarter? Yes <input type="checkbox"/> No <input type="checkbox"/> If yes please specify any comments:</p> <p>----- ----- ----- -----</p>

Follow-up Questionnaire for Irrigation projects (Banks Protection)

**Environmental Follow-up Questionnaire for Irrigation Projects (Banks Protection)
Funded by SFD**

Date of visit: ---- / ---- / ----

Time of visit: -----

Start and end of the quarter covered:

from: ---- / ---- / ----

to: ---- / ---- / ----

Date of filling project basic data: ---- / ---- / ----

Governorate: -----

Markaz: -----

SFD Staff filled this questionnaire: -----

1. Basic Data:

Note: Basic data to be filled at the start of the project with update the data if required during follow-up

Project name: -----			Project Code: -----			
Responsible person: -----		Phone No.: -----		Address: -----		
Project budget: -----			SFD funding: -----			
No. of workers	Permanent <input type="checkbox"/>	Temporary <input type="checkbox"/>	Skilled <input type="checkbox"/>	Semi-Skilled <input type="checkbox"/>	Un-Skilled <input type="checkbox"/>	Total <input type="checkbox"/>
Duration of construction phase (in case no construction phase please ignore this field)						
To: ---- / ---- / ----			From: ---- / ---- / ----			
Supervision period during operation (duration of loan re-payment or 5 years of operation)						
To: ---- / ---- / ----			From: ---- / ---- / ----			
Watercourse data:						
Name of watercourse: ----- km						
Total length of protection works: ----- km			Side of protection works: -----			
Location of protection works						
From: ----- km from start of watercourse			To: ----- km from start of watercourse			

2. Environmental Licensing Data:

EIA classification	Form C <input type="checkbox"/>	Form B: <input type="checkbox"/>	Form A: <input type="checkbox"/>	No requirements: <input type="checkbox"/>
Note: In case of no requirements projects then no need to fill this questionnaire				
Approval of EEAA:				
Has the EIA been submitted to EEAA:	Yes <input type="checkbox"/>	No <input type="checkbox"/>	Date of EIA submission: ---- / ---- / ----	
Has EEAA approved the project:	Yes <input type="checkbox"/>	No <input type="checkbox"/>	Date of EEAA approval: ---- / ---- / ----	
Is EEAA approval conditional:	Yes <input type="checkbox"/>	No <input type="checkbox"/>		
In case of conditional approval please list the conditions:				

Please attach the approval letter of EEAA

3. Follow-up Data (in case of follow-up during construction phase)

Is this follow-up conducted during construction phase? Yes <input type="checkbox"/> No <input type="checkbox"/> If the answer is no please go directly to Section 4
Data of construction waste: Location of construction waste disposal: ----- Capacity of waste truck: ----- m3 Number of trips: ----- Waste qty during the quarter: ----- m3 Is the disposal site identified by the Local Authority? Yes <input type="checkbox"/> No <input type="checkbox"/> Yes but with no <input type="checkbox"/> documentation If there is document (memo – letter) from the Local Authority identifies the disposal site please attach Has the contractor covered waste trucks before transfer? Yes <input type="checkbox"/> No <input type="checkbox"/> If no please specify reasons and measures taken ----- ----- -----
Special environmental issues: Has DoI official supervised the contractor during this quarter? Yes <input type="checkbox"/> No <input type="checkbox"/> If no please specify reasons and measures taken ----- ----- ----- Were there noisy operations during nighttime? Yes <input type="checkbox"/> No <input type="checkbox"/> If yes please specify reasons and measures taken ----- ----- ----- Were the workers near noisy and dusty operations using PPE? Yes <input type="checkbox"/> No <input type="checkbox"/> If no please specify reasons and measures taken ----- ----- -----
Environmental Complains Was there environmental complains from construction works during the quarter (dust – noise – unauthorized waste disposal – Other)? Yes <input type="checkbox"/> No <input type="checkbox"/> If yes please specify type of complaint and the measures taken in response: Complaint 1: ----- Complaint 2: ----- Complaint 3: -----
Implementation of EEAA conditions during construction

In case the conditional approval of EEAA includes specific measures during construction (as identified in Section 2) please specify what has been implemented during the quarter:

In case the conditional approval of EEAA includes specific monitoring measures during construction (as identified in Section 2) please specify what has been implemented during the quarter:

Indicator 1:----- Number of monitoring events during the quarter: ----- Monitoring value: -----

Indicator 2:----- Number of monitoring events during the quarter: ----- Monitoring value: -----

Indicator 3:----- Number of monitoring events during the quarter: ----- Monitoring value: -----

Has there been environmental inspection or any correspondence with EEAA or EMU during the quarter?

Yes No If yes please specify any comments and attach correspondence:

Has there been environmental auditing by an SFD representative during the quarter?

Yes No If yes please specify any comments:

4. Follow-up Data (in case of follow-up during operation phase)

Note: In case no specific measures are required by EEAA during operation phase then no need to fill following data

Implementation of EEAA conditions during operation

In case the conditional approval of EEAA includes specific measures during operation (as identified in Section 2) please specify what has been implemented during the quarter:

In case the conditional approval of EEAA includes specific monitoring measures during operation (as identified in Section 2) please specify what has been implemented during the quarter:

Indicator 1:----- Number of monitoring events during the quarter: ----- Monitoring value: -----

Indicator 2:----- Number of monitoring events during the quarter: ----- Monitoring value: -----

Indicator 3:----- Number of monitoring events during the quarter: ----- Monitoring value: -----

Has there been environmental auditing by an SFD representative during the quarter?

Yes No If yes please specify any comments:

Follow-up Questionnaire for Irrigation projects (Covering Canals and Drains)

**Environmental Follow-up Questionnaire for Irrigation Projects (Covering of Canals and Drains)
Funded by SFD**

Date of visit: ---- / ---- / ----

Time of visit: -----

Start and end of the quarter covered:

from: ---- / ---- / ----

to: ---- / ---- / ----

Date of filling project basic data: ---- / ---- / ----

Governorate: -----

Markaz: -----

SFD Staff filled this questionnaire: -----

1. Basic Data:

Note: Basic data to be filled at the start of the project with update the data if required during follow-up

Project name: -----				Project Code: -----		
Responsible person: -----		Phone No.: -----		Address: -----		
Project budget: -----				SFD funding: -----		
No. of workers	Permanent <input type="checkbox"/>	Temporary <input type="checkbox"/>	Skilled <input type="checkbox"/>	Semi-Skilled <input type="checkbox"/>	Un-Skilled <input type="checkbox"/>	Total <input type="checkbox"/>
Project duration						
To: ---- / ---- / ----			From: ---- / ---- / ----			
Watercourse data:						
Name of watercourse: ---- km						
Total length of covering works: ---- km						
Location of weeding works						
From: ----- km from start of watercourse			To: ----- km from start of watercourse			

2. Environmental Licensing Data:

EIA classification	Form C <input type="checkbox"/>	Form B: <input type="checkbox"/>	Form A: <input type="checkbox"/>	No requirements: <input type="checkbox"/>	
Note: In case of no requirements projects then no need to fill this questionnaire					
Approval of EEAA:					
Has the EIA been submitted to EEAA:	Yes <input type="checkbox"/>	No <input type="checkbox"/>	Date of EIA submission: ---- / ---- / ----		
Has EEAA approved the project:	Yes <input type="checkbox"/>	No <input type="checkbox"/>	Date of EEAA approval: ---- / ---- / ----		
Is EEAA approval conditional:	Yes <input type="checkbox"/>	No <input type="checkbox"/>			
In case of conditional approval please list the conditions:					

Please attach the approval letter of EEAA					

3. Follow-up Data

Special environmental issues:

Has DoI official supervised the contractor during this quarter?

Yes No If no please specify reasons and measures taken

Has the contractor covered waste trucks before transfer?

Yes No If no please specify reasons and measures taken

Were there noisy operations during nightttime?

Yes No If yes please specify reasons and measures taken

Were the workers near noisy and dusty operations using PPE?

Yes No If no please specify reasons and measures taken

Environmental Complains

Was there environmental complains from construction works during the quarter (dust – noise – unauthorized waste disposal – Other)?

Yes No If yes please specify type of complaint and the measures taken in response:

Complaint 1: -----

Complaint 2: -----

Complaint 3: -----

Implementation of EEAA conditions during construction

In case the conditional approval of EEAA includes specific measures during construction (as identified in Section 2) please specify what has been implemented during the quarter:

In case the conditional approval of EEAA includes specific monitoring measures during construction (as identified in Section 2) please specify what has been implemented during the quarter:

Indicator 1:----- Number of monitoring events during the quarter: ----- Monitoring value: -----

Indicator 2:----- Number of monitoring events during the quarter: ----- Monitoring value: -----

Indicator 3:----- Number of monitoring events during the quarter: ----- Monitoring value: -----

Has there been environmental inspection or any correspondence with EEAA or EMU during the quarter?
Yes No If yes please specify any comments and attach correspondence:

Has there been environmental auditing by an SFD representative during the quarter?
Yes No If yes please specify any comments:

Follow-up Questionnaire for Irrigation projects (Weeding)

**Environmental Follow-up Questionnaire for Irrigation Projects (Weeding)
Funded by SFD**

Date of visit: ---- / ---- / ----

Time of visit: -----

Start and end of the quarter covered:

from: ---- / ---- / ----

to: ---- / ---- / ----

Date of filling project basic data: ---- / ---- / ----

Governorate: -----

Markaz: -----

SFD Staff filled this questionnaire: -----

1. Basic Data:

Note: Basic data to be filled at the start of the project with update the data if required during follow-up

Project name: -----			Project Code: -----			
Responsible person: -----		Phone No.: -----		Address: -----		
Project budget: -----			SFD funding: -----			
No. of workers	Permanent <input type="checkbox"/>	Temporary <input type="checkbox"/>	Skilled <input type="checkbox"/>	Semi-Skilled <input type="checkbox"/>	Un-Skilled <input type="checkbox"/>	Total <input type="checkbox"/>
Project duration						
To: ---- / ---- / ----			From: ---- / ---- / ----			
Watercourse data:						
Name of watercourse: ---- km						
Total length of weeding works: ---- km						
Location of weeding works						
From: ----- km from start of watercourse			To: ----- km from start of watercourse			

2. Environmental Licensing Data:

EIA classification	Form C <input type="checkbox"/>	Form B: <input type="checkbox"/>	Form A: <input type="checkbox"/>	No requirements: <input type="checkbox"/>
Note: In case of no requirements projects then no need to fill this questionnaire				
Approval of EEAA:				
Has the EIA been submitted to EEAA:	Yes <input type="checkbox"/>	No <input type="checkbox"/>	Date of EIA submission: ---- / ---- / ----	
Has EEAA approved the project:	Yes <input type="checkbox"/>	No <input type="checkbox"/>	Date of EEAA approval: ---- / ---- / ----	
Is EEAA approval conditional:	Yes <input type="checkbox"/>	No <input type="checkbox"/>		
In case of conditional approval please list the conditions:				

Please attach the approval letter of EEAA				

Has there been environmental auditing by an SFD representative during the quarter?

Yes No If yes please specify any comments:

Follow-up Questionnaire for Public Buildings Rehabilitation Projects

**Environmental Follow-up Questionnaire for Public Buildings Rehabilitation Projects
Funded by SFD**

Date of visit: ---- / ---- / ----

Time of visit: -----

Start and end of the quarter covered:

from: ---- / ---- / ----

to: ---- / ---- / ----

Date of filling project basic data: ---- / ---- / ----

Governorate: -----

Markaz: -----

SFD Staff filled this questionnaire: -----

1. Basic Data:

Note: Basic data to be filled at the start of the project with update the data if required during follow-up

Project name: -----			Project Code: ----- -----			
Responsible person: -----		Phone No.: -----		Address: ----- -----		
Project budget: -----			SFD funding: ----- -----			
No. of workers	Permanent <input type="checkbox"/>	Temporary <input type="checkbox"/>	Skilled <input type="checkbox"/>	Semi-Skilled <input type="checkbox"/>	Un-Skilled <input type="checkbox"/>	Total <input type="checkbox"/> <input type="checkbox"/>
Rehabilitation duration To: ---- / ---- / ----			From: ---- / ---- / ----			
Building and Rehabilitation data:						
Type of building:	School <input type="checkbox"/>	Hospital <input type="checkbox"/>	Youth center <input type="checkbox"/>	Houses <input type="checkbox"/>		
Name of building: -----			Address: -----			
Description of rehabilitation works: ----- ----- -----						

2. Environmental Licensing Data:

EIA classification	Form C <input type="checkbox"/>	Form B: <input type="checkbox"/>	Form A: <input type="checkbox"/>	No requirements: <input type="checkbox"/>
Note: In case of no requirements projects then no need to fill this questionnaire				
Approval of EEAA:				
Has the EIA been submitted to EEAA:	Yes <input type="checkbox"/>	No <input type="checkbox"/>	Date of EIA submission: ---- / ---- / ----	
Has EEAA approved the project:	Yes <input type="checkbox"/>	No <input type="checkbox"/>	Date of EEAA approval: ---- / ---- / ----	

Is EEAA approval conditional: Yes No

In case of conditional approval please list the conditions:

Please attach the approval letter of EEAA

3. Follow-up Data

Data of construction waste:

Location of construction waste disposal: -----

Capacity of waste truck: ---- m3 Number of trips: ----- Waste qty during the quarter: ----- m3

Is the disposal site identified by the Local Authority? Yes No Yes but with no
documentation

If there is document (memo – letter) from the Local Authority identifies the disposal site please attach

Has the contractor covered waste trucks before transfer?

Yes No If no please specify reasons and measures taken

Specific Environmental Issues:

Has Governorate official supervised the contractor during this quarter?

Yes No If no please specify reasons and measures taken

Were there noisy operations during nighttime?

Yes No If yes please specify reasons and measures taken

Were the workers near noisy and dusty operations using PPE?

Yes No If no please specify reasons and measures taken

Were there dismantling of asbestos materials?

Yes No If yes please specify method of dismantling, packaging, transfer and disposal

Was there usage of oil based paints?

Yes No If yes please specify reason and precautions taken

Were there rehabilitation works at schools during studying period?
Yes No If yes please specify reason and precautions taken

Environmental Complains

Was there environmental complains from construction works during the quarter (dust – noise – unauthorized waste disposal – Other)?
Yes No If yes please specify type of complaint and the measures taken in response:
Complaint 1: -----
Complaint 2: -----
Complaint 3: -----

Implementation of EEAA conditions during construction

In case the conditional approval of EEAA includes specific measures during construction (as identified in Section 2) please specify what has been implemented during the quarter:

In case the conditional approval of EEAA includes specific monitoring measures during construction (as identified in Section 2) please specify what has been implemented during the quarter:

Indicator 1:----- Number of monitoring events during the quarter: ----- Monitoring value: -----
Indicator 2:----- Number of monitoring events during the quarter: ----- Monitoring value: -----
Indicator 3:----- Number of monitoring events during the quarter: ----- Monitoring value: -----

Has there been environmental inspection or any correspondence with EEAA or EMU during the quarter?
Yes No If yes please specify any comments and attach correspondence:

Has there been environmental auditing by an SFD representative during the quarter?

Yes No If yes please specify any comments:

Follow-up Questionnaire for Water Networks Projects

**Environmental Follow-up Questionnaire for Water Networks Projects
Funded by SFD**

Date of visit: ---- / ---- / ----

Time of visit: -----

Start and end of the quarter covered:

from: ---- / ---- / ----

to: ---- / ---- / ----

Date of filling project basic data: ---- / ---- / ----

Governorate: -----

Markaz: -----

SFD Staff filled this questionnaire: -----

1. Basic Data:

Note: Basic data to be filled at the start of the project with update the data if required during follow-up

Project name: -----			Project Code: -----			
Responsible person: -----		Phone No.: -----		Address: -----		
Project budget: -----			SFD funding: -----			
No. of workers	Permanent <input type="checkbox"/>	Temporary <input type="checkbox"/>	Skilled <input type="checkbox"/>	Semi-Skilled <input type="checkbox"/>	Un-Skilled <input type="checkbox"/>	Total <input type="checkbox"/>
Duration of construction phase (in case no construction phase please ignore this field)						
To: ---- / ---- / ----			From: ---- / ---- / ----			
Supervision period during operation (duration of loan re-payment or 5 years of operation)						
To: ---- / ---- / ----			From: ---- / ---- / ----			
Water network data:						
Length of network: ---- km						
Villages and settlements served by the network						
Village 1: -----		Population: -----		Village 2: -----		Population: -----
Village 3: -----		Population: -----		Village 4: -----		Population: -----

2. Environmental Licensing Data:

EIA classification	Form C <input type="checkbox"/>	Form B: <input type="checkbox"/>	Form A: <input type="checkbox"/>
Approval of EEAA:			
Has the EIA been submitted to EEAA:	Yes <input type="checkbox"/>	No <input type="checkbox"/>	Date of EIA submission: ---- / ---- / ----
Has EEAA approved the project:	Yes <input type="checkbox"/>	No <input type="checkbox"/>	Date of EEAA approval: ---- / ---- / ----
Is EEAA approval conditional:	Yes <input type="checkbox"/>	No <input type="checkbox"/>	
In case of conditional approval please list the conditions:			

Please attach the approval letter of EEAA

3. Follow-up Data (in case of follow-up during construction phase)

Is this follow-up conducted during construction phase? Yes <input type="checkbox"/> No <input type="checkbox"/> If the answer is no please go directly to Section 4
Data of construction waste: Location of construction waste disposal: ----- Capacity of waste truck: ----- m3 Number of trips: ----- Waste qty during the quarter: ----- m3 Is the disposal site identified by the Local Authority? Yes <input type="checkbox"/> No <input type="checkbox"/> Yes but with no <input type="checkbox"/> documentation If there is document (memo – letter) from the Local Authority identifies the disposal site please attach Has the contractor covered waste trucks before transfer? Yes <input type="checkbox"/> No <input type="checkbox"/> If no please specify reasons and measures taken ----- ----- -----
Special environmental issues: Has Housing and Utilities Directorate official supervised the contractor during this quarter? Yes <input type="checkbox"/> No <input type="checkbox"/> If no please specify reasons and measures taken ----- ----- ----- Were there dismantling of asbestos materials? Yes <input type="checkbox"/> No <input type="checkbox"/> If yes please specify method of dismantling, packaging, transfer and disposal ----- ----- ----- Were there noisy operations during nighttime? Yes <input type="checkbox"/> No <input type="checkbox"/> If yes please specify reasons and measures taken ----- ----- ----- Were the workers near noisy and dusty operations using PPE? Yes <input type="checkbox"/> No <input type="checkbox"/> If no please specify reasons and measures taken ----- ----- ----- Were there complaints about obstructing traffic during construction? Yes <input type="checkbox"/> No <input type="checkbox"/> If yes please specify reasons and measures taken ----- ----- -----

Environmental Complains

Was there environmental complains from construction works during the quarter (dust – noise – unauthorized waste disposal – Other)?

Yes No If yes please specify type of complaint and the measures taken in response:

Complaint 1: -----

Complaint 2: -----

Complaint 3: -----

Implementation of EEAA conditions during construction

In case the conditional approval of EEAA includes specific measures during construction (as identified in Section 2) please specify what has been implemented during the quarter:

In case the conditional approval of EEAA includes specific monitoring measures during construction (as identified in Section 2) please specify what has been implemented during the quarter:

Indicator 1:----- Number of monitoring events during the quarter: ----- Monitoring value: -----

Indicator 2:----- Number of monitoring events during the quarter: ----- Monitoring value: -----

Indicator 3:----- Number of monitoring events during the quarter: ----- Monitoring value: -----

Has there been environmental inspection or any correspondence with EEAA or EMU during the quarter?

Yes No If yes please specify any comments and attach correspondence:

Has there been environmental auditing by an SFD representative during the quarter?

Yes No If yes please specify any comments:

4. Follow-up Data (in case of follow-up during operation phase)

Special environmental issues:

Were there maintenance and repair operations during the quarter?

Yes No If yes please specify location, type of repair, duration of cutting the water supply and methods of waste disposal

Was there failure or leakage from the network during the quarter?

Yes No If yes please specify location, reason of the accident, amount of leaked water and methods of waste disposal

Implementation of EEAA conditions during operation

In case the conditional approval of EEAA includes specific measures during operation (as identified in Section 2) please specify what has been implemented during the quarter:

In case the conditional approval of EEAA includes specific monitoring measures during operation (as identified in Section 2) please specify what has been implemented during the quarter:

Indicator 1:----- Number of monitoring events during the quarter: ----- Monitoring value: -----

Indicator 2:----- Number of monitoring events during the quarter: ----- Monitoring value: -----

Indicator 3:----- Number of monitoring events during the quarter: ----- Monitoring value: -----

Has there been environmental auditing by an SFD representative during the quarter?

Yes No If yes please specify any comments:

Follow-up Questionnaire for Sewerage Networks Projects

**Environmental Follow-up Questionnaire for Sewerage Networks Projects
Funded by SFD**

Date of visit: ---- / ---- / ----

Time of visit: -----

Start and end of the quarter covered:

from: ---- / ---- / ----

to: ---- / ---- / ----

Date of filling project basic data: ---- / ---- / ----

Governorate: -----

Markaz: -----

SFD Staff filled this questionnaire: -----

1. Basic Data:

Note: Basic data to be filled at the start of the project with update the data if required during follow-up

Project name: -----			Project Code: -----			
Responsible person: -----		Phone No.: -----		Address: -----		
Project budget: -----			SFD funding: -----			
No. of workers	Permanent <input type="checkbox"/>	Temporary <input type="checkbox"/>	Skilled <input type="checkbox"/>	Semi-Skilled <input type="checkbox"/>	Un-Skilled <input type="checkbox"/>	Total <input type="checkbox"/>
Duration of construction phase (in case no construction phase please ignore this field)						
To: ---- / ---- / ----			From: ---- / ---- / ----			
Supervision period during operation (duration of loan re-payment or 5 years of operation)						
To: ---- / ---- / ----			From: ---- / ---- / ----			
Sewerage network data:						
Length of network: ---- km						
Villages and settlements served by the network						
Village 1: -----		Population: -----		Village 2: -----		Population: -----
Village 3: -----		Population: -----		Village 4: -----		Population: -----

2. Environmental Licensing Data:

EIA classification	Form C <input type="checkbox"/>	Form B: <input type="checkbox"/>	Form A: <input type="checkbox"/>
Approval of EEAA:			
Has the EIA been submitted to EEAA:	Yes <input type="checkbox"/>	No <input type="checkbox"/>	Date of EIA submission: ---- / ---- / ----
Has EEAA approved the project:	Yes <input type="checkbox"/>	No <input type="checkbox"/>	Date of EEAA approval: ---- / ---- / ----
Is EEAA approval conditional:	Yes <input type="checkbox"/>	No <input type="checkbox"/>	
In case of conditional approval please list the conditions:			

Please attach the approval letter of EEAA

3. Follow-up Data (in case of follow-up during construction phase)

Is this follow-up conducted during construction phase?	Yes <input type="checkbox"/>	No <input type="checkbox"/>	If the answer is no please go directly to Section 4
Data of construction waste: Location of construction waste disposal: ----- Capacity of waste truck: ----- m3 Number of trips: ----- Waste qty during the quarter: ----- m3 Is the disposal site identified by the Local Authority? Yes <input type="checkbox"/> No <input type="checkbox"/> Yes but with no <input type="checkbox"/> documentation If there is document (memo – letter) from the Local Authority identifies the disposal site please attach Has the contractor covered waste trucks before transfer? Yes <input type="checkbox"/> No <input type="checkbox"/> If no please specify reasons and measures taken ----- ----- -----			
Special environmental issues: Has Housing and Utilities Directorate official supervised the contractor during this quarter? Yes <input type="checkbox"/> No <input type="checkbox"/> If no please specify reasons and measures taken ----- ----- ----- Were there dismantling of asbestos materials? Yes <input type="checkbox"/> No <input type="checkbox"/> If yes please specify method of dismantling, packaging, transfer and disposal ----- ----- ----- Were there noisy operations during nighttime? Yes <input type="checkbox"/> No <input type="checkbox"/> If yes please specify reasons and measures taken ----- ----- ----- Were the workers near noisy and dusty operations using PPE? Yes <input type="checkbox"/> No <input type="checkbox"/> If no please specify reasons and measures taken ----- ----- ----- Were there complaints about obstructing traffic during construction? Yes <input type="checkbox"/> No <input type="checkbox"/> If yes please specify reasons and measures taken ----- ----- -----			

Environmental Complains

Was there environmental complains from construction works during the quarter (dust – noise – unauthorized waste disposal – Other)?

Yes No If yes please specify type of complaint and the measures taken in response:

Complaint 1: -----

Complaint 2: -----

Complaint 3: -----

Implementation of EEAA conditions during construction

In case the conditional approval of EEAA includes specific measures during construction (as identified in Section 2) please specify what has been implemented during the quarter:

In case the conditional approval of EEAA includes specific monitoring measures during construction (as identified in Section 2) please specify what has been implemented during the quarter:

Indicator 1:----- Number of monitoring events during the quarter: ----- Monitoring value: -----

Indicator 2:----- Number of monitoring events during the quarter: ----- Monitoring value: -----

Indicator 3:----- Number of monitoring events during the quarter: ----- Monitoring value: -----

Has there been environmental inspection or any correspondence with EEAA or EMU during the quarter?

Yes No If yes please specify any comments and attach correspondence:

Has there been environmental auditing by an SFD representative during the quarter?

Yes No If yes please specify any comments:

4. Follow-up Data (in case of follow-up during operation phase)

Special environmental issues:

Were there maintenance and repair operations during the quarter?

Yes No If yes please specify location, type of repair and methods of waste disposal

Was there failure or leakage from the network during the quarter?

Yes No If yes please specify location, reason of the accident, amount of leaked sewage and methods of sewage collection and disposal

Implementation of EEA conditions during operation

In case the conditional approval of EEA includes specific measures during operation (as identified in Section 2) please specify what has been implemented during the quarter:

In case the conditional approval of EEA includes specific monitoring measures during operation (as identified in Section 2) please specify what has been implemented during the quarter:

Indicator 1:----- Number of monitoring events during the quarter: ----- Monitoring value: -----
Indicator 2:----- Number of monitoring events during the quarter: ----- Monitoring value: -----
Indicator 3:----- Number of monitoring events during the quarter: ----- Monitoring value: -----

Has there been environmental auditing by an SFD representative during the quarter?

Yes No If yes please specify any comments:

Follow-up Questionnaire for NGO Cleansing Campaigns

**Environmental Follow-up Questionnaire for NGO Cleansing Campaigns
Funded by SFD**

Date of visit: ---- / ---- / ----

Time of visit: -----

Start and end of the quarter covered:

from: ---- / ---- / ----

to: ---- / ---- / ----

Date of filling project basic data: ---- / ---- / ----

Governorate: -----

Markaz: -----

SFD Staff filled this questionnaire: -----

1. Basic Data:

Note: Basic data to be filled at the start of the project with update the data if required during follow-up

Project name: -----				Project Code: -----		
NGO Name: -----						
Responsible person: -----						
Project budget: -----				SFD funding: -----		
No. of workers	Permanent <input type="checkbox"/>	Temporary <input type="checkbox"/>	Skilled <input type="checkbox"/>	Semi-Skilled <input type="checkbox"/>	Un-Skilled <input type="checkbox"/>	Total <input type="checkbox"/>
Duration of the campaign						
To: ---- / ---- / ----			From: ---- / ---- / ----			
Campaign data:						
Villages and settlements served by the campaign						
Village 1: -----		Population: -----		Village 2: -----		Population: -----
Village 3: -----		Population: -----		Village 4: -----		Population: -----

2. Follow-up Data

Data of waste accumulations:			
Locations of waste accumulations			
Location 1: -----	Capacity of waste truck: ---- m3	Number of trips: -----	Waste qty during the quarter: ----- m3
Location 2: -----	Capacity of waste truck: ---- m3	Number of trips: -----	Waste qty during the quarter: ----- m3
Location 3: -----	Capacity of waste truck: ---- m3	Number of trips: -----	Waste qty during the quarter: ----- m3
Location of waste disposal: -----			
Is the disposal site identified by the Local Authority? Yes <input type="checkbox"/> No <input type="checkbox"/> Yes but with no documentation <input type="checkbox"/>			
If there is document (memo – letter) from the Local Authority identifies the disposal site please attach			

Has the contractor covered waste trucks before transfer?

Yes No If no please specify reasons and measures taken

Data of waste collection from residential and commercial units:

Locations of served settlements

Area 1: -----	Capacity of waste truck: ----- ----- m3	Number of trips: -----	Waste qty during the quarter: ----- m3
Area 2: -----	Capacity of waste truck: ----- ----- m3	Number of trips: -----	Waste qty during the quarter: ----- m3
Area 3: -----	Capacity of waste truck: ----- ----- m3	Number of trips: -----	Waste qty during the quarter: ----- m3

Location of waste disposal: -----

Is the disposal site identified by the Local Authority? Yes No Yes but with no
documentation

If there is document (memo – letter) from the Local Authority identifies the disposal site please attach

Has the contractor covered waste trucks before transfer?

Yes No If no please specify reasons and measures taken

Special environmental issues:

Has NGO official supervised the waste collection during this quarter?

Yes No If no please specify reasons and measures taken

Were the workers near noisy and dusty operations using PPE?

Yes No If no please specify reasons and measures taken

Was there tree plantation during the quarter?

Yes No If yes please specify number and type of planted trees in each area

Environmental Complains

Was there environmental complains from construction works during the quarter (dust – noise – unauthorized waste disposal – Other)?

Yes No If yes please specify type of complaint and the measures taken in response:

Complaint 1: -----
Complaint 2: -----
Complaint 3: -----

Has there been environmental auditing by an SFD representative during the quarter?

Yes No If yes please specify any comments:

Follow-up Questionnaire for NGO Sewage Cesspits Evacuation

**Environmental Follow-up Questionnaire for NGO Sewage Cesspits Evacuation
Funded by SFD**

Date of visit: ---- / ---- / ----

Time of visit: -----

Start and end of the quarter covered:

from: ---- / ---- / ----

to: ---- / ---- / ----

Date of filling project basic data: ---- / ---- / ----

Governorate: -----

Markaz: -----

SFD Staff filled this questionnaire: -----

1. Basic Data:

Note: Basic data to be filled at the start of the project with update the data if required during follow-up

Project name: -----				Project Code: -----		
NGO Name: -----						
Responsible person: -----						
Project budget: -----				SFD funding: -----		
No. of workers	Permanent <input type="checkbox"/>	Temporary <input type="checkbox"/>	Skilled <input type="checkbox"/>	Semi-Skilled <input type="checkbox"/>	Un-Skilled <input type="checkbox"/>	Total <input type="checkbox"/>
Duration of the project						
To: ---- / ---- / ----			From: ---- / ---- / ----			
Campaign data:						
Villages and settlements served by the project						
Village 1: -----		Population: -----		Village 2: -----		Population: -----
Village 3: -----		Population: -----		Village 4: -----		Population: -----

2. Follow-up Data

Project data:			
Locations of served settlements			
Area 1: -----	Capacity of sewage tanker: ----- m3	Number of trips: -----	Sewage qty during the quarter: ----- m3
Area 2: -----	Capacity of waste truck: ----- m3	Number of trips: -----	Sewage qty during the quarter: ----- m3
Area 3: -----	Capacity of waste truck: ----- m3	Number of trips: -----	Sewage qty during the quarter: ----- m3
Location of sewage evacuation: -----		WWTP <input type="checkbox"/>	Pumping Station <input type="checkbox"/>
		Other <input type="checkbox"/>	Please specify -----
Is there documents that proofs that the sewage has been evacuated at the designated location?			
Yes <input type="checkbox"/> No <input type="checkbox"/> If yes please attach the document and if no please specify reasons			

Environmental Complains

Was there environmental complains from construction works during the quarter (dust – noise – odors – unauthorized waste disposal – Other)?

Yes No If yes please specify type of complaint and the measures taken in response:

Complaint 1: -----

Complaint 2: -----

Complaint 3: -----

Has there been environmental auditing by an SFD representative during the quarter?

Yes No If yes please specify any comments:

Follow-up Questionnaire for NGO Healthcare Projects

**Environmental Follow-up Questionnaire for NGO Healthcare Projects
Funded by SFD**

Date of visit: ---- / ---- / ----

Time of visit: -----

Start and end of the quarter covered:

from: ---- / ---- / ----

to: ---- / ---- / ----

Date of filling project basic data: ---- / ---- / ----

Governorate: -----

Markaz: -----

SFD Staff filled this questionnaire: -----

1. Basic Data:

Note: Basic data to be filled at the start of the project with update the data if required during follow-up

Project name: -----				Project Code: -----		
NGO Name: -----						
Responsible person: -----						
Project budget: -----				SFD funding: -----		
No. of workers	Permanent <input type="checkbox"/>	Temporary <input type="checkbox"/>	Skilled <input type="checkbox"/>	Semi-Skilled <input type="checkbox"/>	Un-Skilled <input type="checkbox"/>	Total <input type="checkbox"/>
Duration of the project						
To: ---- / ---- / ----				From: ---- / ---- / ----		
Project data:						
Name and type of the entity: -----				Healthcare services provided: -----		

2. Follow-up Data

<p>Healthcare waste data:</p> <p>Was there generation of healthcare waste during the quarter? If yes please identify type of generated waste (sharps and non-sharps) and their quantity</p> <p>-----</p> <p>-----</p> <p>-----</p> <p>Method of collection of sharps----- Method of collection of non-sharps: -----</p> <p>Name of disposal site of healthcare waste: -----</p> <p>Is the disposal site approved by the Local Authority and has environmental license?</p> <p>Yes <input type="checkbox"/> No <input type="checkbox"/> If no please specify reasons</p> <p>-----</p> <p>-----</p> <p>-----</p>
--

Is there a contract between the healthcare waste establishment and the disposal site?

Yes No If n please attach the contract and if no please specify reasons

Has there been environmental auditing by an SFD representative during the quarter?

Yes No If yes please specify any comments:

